

-middle distance-

The 11th Japan Orienteering Championships 2022

-long distance-

The 49th Japan Orienteering Championships 2022

IOF World Ranking Event / M21E & W21E

October 8/9, 2022

The changes from the previous version are painted in yellow.

Japanese version of bulletin 1.1

(https://www.orienteering.or.jp/joc/2022/docs/JOCML2022_bulletin2.pdf) was made by adding information for non-WRE competitors to this bulletin. In terms of the competition information, the contents of the two documents are the same.

Event center: Fujiten Snow Resort

Address : 8545-1, Aza-Fujiyama, Narusawa-mura, Minamitsuru-gun, Yamanashi
prefecture

Google map: https://g.page/fujiten_now?share

Event Organizer	Japan Orienteering Association
IOF Event Adviser	Shin MURAKOSHI
Event Director	Saho KUME
Event Secretary	Daiki KUWABARA
Technical Director	Yutaro MIYANISHI
Course Planner (middle)	Yosuke OISHI
Course Planner (long)	Takashi IRIE

General Information

■ Access to the event center

By car

20 minutes from Kawaguchiko IC (Chuo Expressway)

20 minutes from Fujiyoshida IC (Higashi-Fujigoko Expressway)

Note: Visits by car is strongly recommended.

By train

The nearest station is Kawaguchiko station (Fujisanroku Electric Railway)

The convention bus will be provided from Kawaguchiko Station, Shinfuji Station (Tokaido Shinkansen Line, JR CENTRAL) and Fujinomiya Station (Minobu Line, JR CENTRAL) to the event center.

When using Kawaguchiko Station, the convention bus should be used. Please refrain from using ordinary buses and other public transportation as much as possible.

The information will be published in the bulletin for Japanese by the end of July. If you need the information in English, please email us.

■ Contact address

e-mail: ajoc@orienteering.or.jp

Contact person about VISA: Kimiya OCHIAI (ochiai.kimiya@gmail.com)

Competition Information

■ General information

	Oct. 8	Oct. 9
Race	Middle Distance	Long Distance
First Start	10:30	9:00
Finish close	15:30	15:00

■ Race information

	Oct. 8 Middle distance	Oct. 9 Long distance
Start interval	2 minutes	2 minutes
Map Scale	1:10,000	1:10,000
Contour interval	5m	
Specification	ISOM2017-2	
Old/previous Map	You can see by visiting following URL https://www.orienteering.or.jp/joc/2022/assets/img/fujiten.jpg https://www.orienteering.or.jp/joc/2022/assets/img/jiragonno.jpg	
Punching system	SPORTident system (SI-card)	

Note1: There will be deviations as to the startlists from the "WRE Manual 2022" published by the IOF. The start order will be decided according to the National ranking of Japan instead of IOF world ranking.

Note2: The map scale for long distance is 1:10,000 since the IOF Event Adviser approved the scale of 1:10,000 because of the readability of the map with detailed features.

Note3: WRE competitors will be quarantined from 10:00.

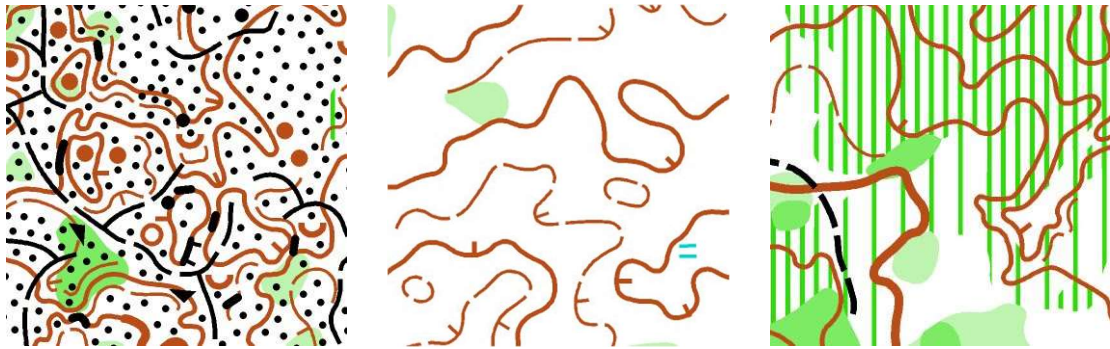
Note4: Personal SI-cards can be used.

■ Terrain information

This terrain is located at an altitude of about 1100 to 1400 meters above sea level and consists of Fujiten Snow Resort and the surrounding mountain forest. In the northwestern part, the slope is generally gentle with some micro terrain features. In the southeastern part, there are steep areas with some re-entrants. Most of the terrain is forest (A) (405) with good visibility, but some areas are difficult to run fast because of

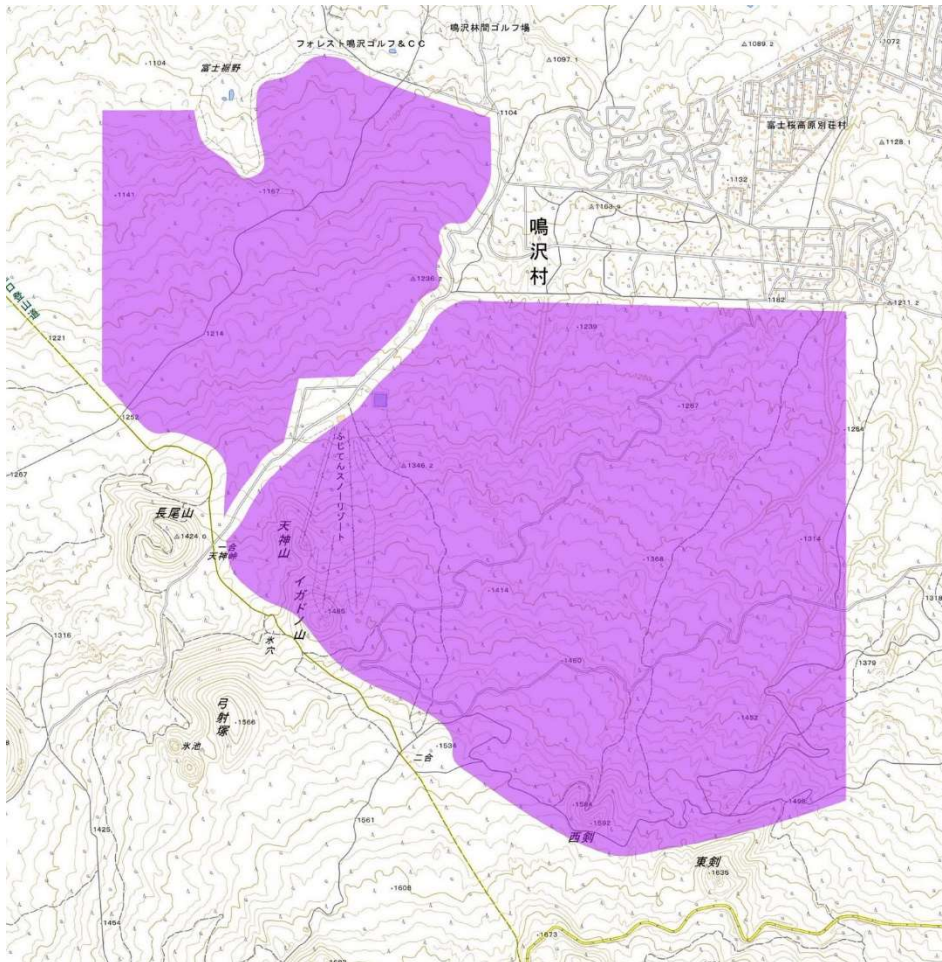
vegetation or stony ground. Roads, vehicle track or footpath exist almost throughout the area, but there are some areas with no footpath. Rivers and wetlands are few. In the northwestern part, there are scattered boulders of various sizes.

■ Sample maps



■ Embargoed area

According to the IOF Competition rules (§ 26.5), embargoed areas are forbidden for all competitors.



■ **Class (World Ranking Event)**

W21E and M21E are the classes for World Ranking Event.

	Oct. 8 Middle Distance		Oct. 9 Long Distance	
Class	Length	Winning time	Length	Winning time
W21E	5km	35 minutes	9km	80 minutes
M21E	6km	35 minutes	14km	100 minutes

Note 1: There will be a restriction on the entry of foreign competitors in this race.

The organizer will check the world ranking and inform you whether you can entry or not. Competitors must have an IOF ID. Visit IOF eventor to obtain or search for your IOF ID, and enter your IOF ID when you register.

Note 2: There is Non-World Ranking Event class. The information will be published in the bulletin for Japanese by the end of July. If you need the information in English, please email us.

■ **Entry fees**

	Class	Regular	University students	18 and younger
Oct. 8 Middle distance	W21E	6500 JPY	4000 JPY	2500 JPY
Oct. 9 Long distance	/M21E	7500 JPY	4500 JPY	3000 JPY

Note1: Not including SI-card rental fee. If you use rental SI-card, rental fee 200 JPY is added to the entry fee per each day.

Note2: Students must be between 19 and 28 years old at March 31, 2023, and studying in university, junior college, graduate school, or technical college.

■ **Clothing and shoes**

There are no regulations regarding clothing and shoes, but the following items or clothing are recommended.

- Leg guards, gloves and whistle (since there are some areas with stony ground, and the boulders are pointy because they are lava)

- Insect repellent spray, long sleeves and pants (since ticks are found in the terrain)

Only GPS (GNSS) equipment without image display is allowed to be used.

■ Climate and Hazards

Average values over the past 30 years are as follows.

The observation point: Lake Kawaguchi

Note: The elevation of the observation point is 860m (240~540m lower than the terrain).

Average temperature (°C)	14.3
Maximum temperature (°C)	19.0
Minimum temperature (°C)	10.6
Precipitation days (in 60days)	36

There are bears and bees, but they are very unlikely to be encountered during the event.

■ Training Opportunity

There is a training opportunity in the similar terrain as follows.

Event Name: Yamakawa Dream #29

Date: July 30-31, 2022 (Saturday and Sunday)

Event center: Nakanohou Town, Ena city, Gifu Prefecture

Entry procedure

Deadline: Monday, September 19, 2022

Payment closing date: Tuesday, September 20, 2022

Entries can be made through web entry system.

■ Web entry system

Please visit following URL <https://japan-o-entry.com/event/view/1026> and fill the entry form.

Note: This entry system is written by Only Japanese. If you need instructions on how to use it, please visit following URL.

https://japan-o-entry.com/public_file/guide_for_foreign_customer.pdf

■ Payment

Payment can be made by the **web entry system**. You can pay the entry fee by credit card.

Other information

■ Visa

Please ask your nearest Japanese Embassy for further details or visit following URL for latest information.

http://www.mofa.go.jp/j_info/visit/visa/

If you cannot get enough information, please contact us(ochiai.kimiya@gmail.com)

■ Accommodation

There are many dormitories and hotels in Narusawa-mura. There are hotels, cottage and other kinds of accommodation. Accommodation fee is about 6-12 thousand yen with two or three meals per night. Please check following URL.

<https://www.narusawa-kanko.jp/all-round.html>

Note: Sorry for the lack of English information. If you click on the image of each accommodation, you can get information from their websites.

■ Transportation

If you need support about transportation, please ask our contact office.

e-mail: ajoc@orienteering.or.jp

■ Web site/SNS

Web site: <https://orienteering.or.jp/joc/2022/>

Twitter: <https://twitter.com/orienteeringJOC>

Instagram: <https://www.instagram.com/orienteeringjoc/>