

BULLETIN 3



Japan Orienteering Championship 2012

The 38th All Japan Orienteering Event

May 4th, 2012, Hiroshima, Japan

Official website: <http://www.orienteering.or.jp/joc/2012/en>

Event Organizer:

Hiroshima Orienteering Association

E-mail: joc2012@orienteering.or.jp

Tel&Fax: 0848-38-0719 (-21:00)

Mobile phone: 090-2800-0178 (available on May 3rd and 4th)

Event Officials:

Event Director

Takashi SHIMIZU

Technical Director

Toshifumi YOSHIMURA

Event Advisor / controller

IOF Senior Event Adviser

Toshio ONOYE (Japan)

Event Controller

Kyokuichi SATO (Okayama, Japan)

Jury:

Kayoko SAKAI (Tokyo, Japan)

Toru Tanaka (Chiba, Japan)

Shin Murakoshi (Shizuoka, Japan)

1. General Information

Event Schedule:

Thursday, May 3 rd	Sprint (Local Event)
Venue	Kyukamura "Taishakukyo" (Kamitaisyaku, Shobara city) http://www.qkamura.or.jp/en/taishaku/
12:00-14:00	Registration
13:00-14:10	Start
15:00	Closure of finish
Friday, May 4 th	Long distance, All Japan O-Championships / World Ranking Event)
Venue	Cosmo Dome (Skola-Kogen, Jinsekikogen town) http://www2.ocn.ne.jp/~sukora/
08:30-	Registration
10:00-12:00	Start
15:00	Closure of finish
12:00-15:30	Prize giving ceremony
14:00-15:00	Prize giving ceremony for WRE
Saturday, May 5 th	Relay (Local Event)
Venue	Cosmo Dome (Skola-Kogen, Jinsekikogen town)
08:00-08:30	Registration
08:30	Opening ceremony
08:50	Start (7 legs)
09:00	Start (4 legs for veteran)
13:10	Mass start for remaining competitors
14:00-	Prize giving and Closing ceremony
15:00	Closure of finish
15:00	Bus transport to the Fukuyama station

* Please visit <http://www.orienteering.com/~ymoe/index.htm> for more information about the local events

Access to the Event:

[By car]

From Chuugoku Expressway Shobara IC: 24km, about 40 minutes

From Chuugoku Expressway Tojo IC: 12km, about 15 minutes

Car parking:

May 3rd Kyukamura "Taishakukyo" (GPS: N34.8440, E133.2373)

May 4th & 5th Cosmo Dome (GPS: N 34.8540, E133.2035)

[By Official Bus Service]

Official bus services will be available from JR Fukuyama station in Fukuyama city (about 90 minutes).

Date	Fukuyama station	Sanwa area	Kyukamura	Jinryu-ko / Kamitaishaku	Skola-kogen
May 3 rd	10:30	-	12:00	12:20	12:30
	16:00	16:45	-	18:00	17:30
May 4 th & 5 th	06:45	07:30	-	-	08:15

	Skola-kogen	Kyukamura	Sanwa area	Fukuyama station
May 3 rd	17:30	17:20	18:15	19:00
May 4 th & 5 th	15:00		15:45	16:30

Reservation is essential for this service.

The deadline of reservation is April 26 (Thu).

Please call to Nippon Travel Agency, Fukuyama (084-931-2611, Murata, Araki)

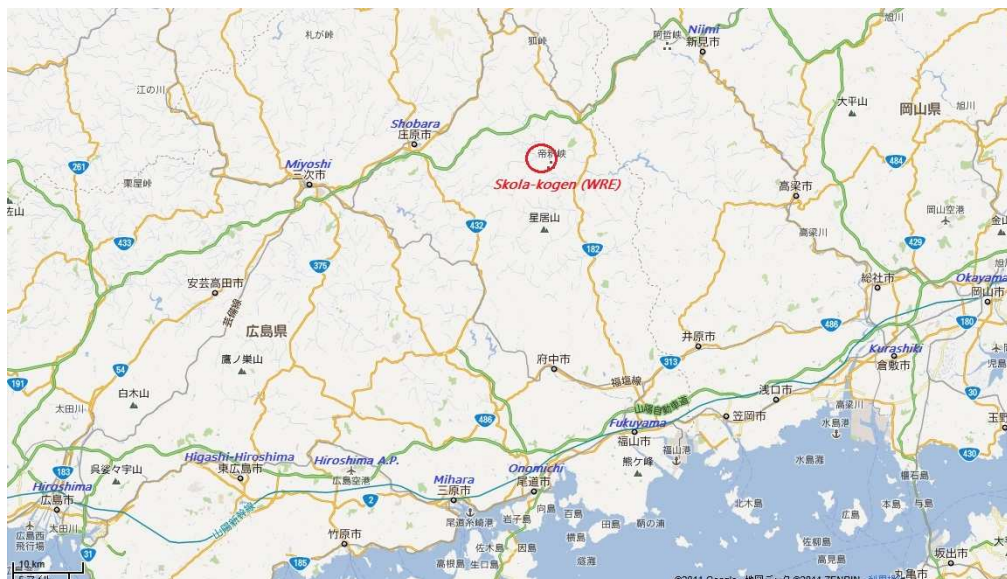
[By taxi from Tojo town]

From Tojo station, JR Geibi line to Skola-kogen: about 20 min. (3,000yen)

From Tojo highway bus stop to Skora-kogen: about 15 min. (3,000yen)

[Highway/local bus]

There are several high way buses from Osaka and Hiroshima, and local buses from Fukuyama to Tojo town. However, these buses are not in time for your starting time on the day.



2. Competition Information

Competition rules:

The Competition Rules for IOF Foot Orienteering Events (Valid from 1 January 2011) and the Guidelines for World Ranking Events (WRE) (2011 Edition) are applied to the WRE event. To public classes (non WRE), the Competition Rules of JOA are applied.

Fair Play:

All competitors shall behave with fairness and honesty. During the races athletes are forbidden to speak to each other.

Any attempt to survey, walk or train for the purpose of orienteering in the embargoed areas is forbidden before competition. Attempts to gain any information related to the course, beyond that provided by the organizer, is forbidden before and during the competition.

Having crossed the finish line, a competitor may not re-enter the competition terrain without the permission of the organizer. A competitor who breaks any rule, or benefits from the breaking of any rule, may be disqualified.

Drug Policy

The IOF Anti-Doping Rules apply to WRE event. Competitors who are asked by the event officials at the finish area shall follow their instructions.

Terrain:

The terrain is relatively steep terrain with height difference of about 195m (370 - 565m above sea level). Most part of terrain is covered by conifer trees and runnability is relatively good. However, there are some medium green as shown on the map. Some green are covered with wild roses which have thorns. Full cover O-suits are recommended. In many parts of the forest, cut and fallen trees are left, which make runnability worse.

The terrain consists of two areas, divided by the Mito-river. One area, the northern one is Kami-Taisyaku area, which is called "Taisyaku-kyo" by local people. Along the river, both sides have steep slopes or cliffs of 80 - 100 meters high.

The other area, the southern one is called "Skola-kogen". "Kogen" means highland or plateau, so the southern part of terrain is a kind of highland at the height of 500 to 550meters, surrounded with steep slopes and rivers. On the highland, some large and small sinkholes; "dolines" and a few deep pits which might lead to caves are seen.

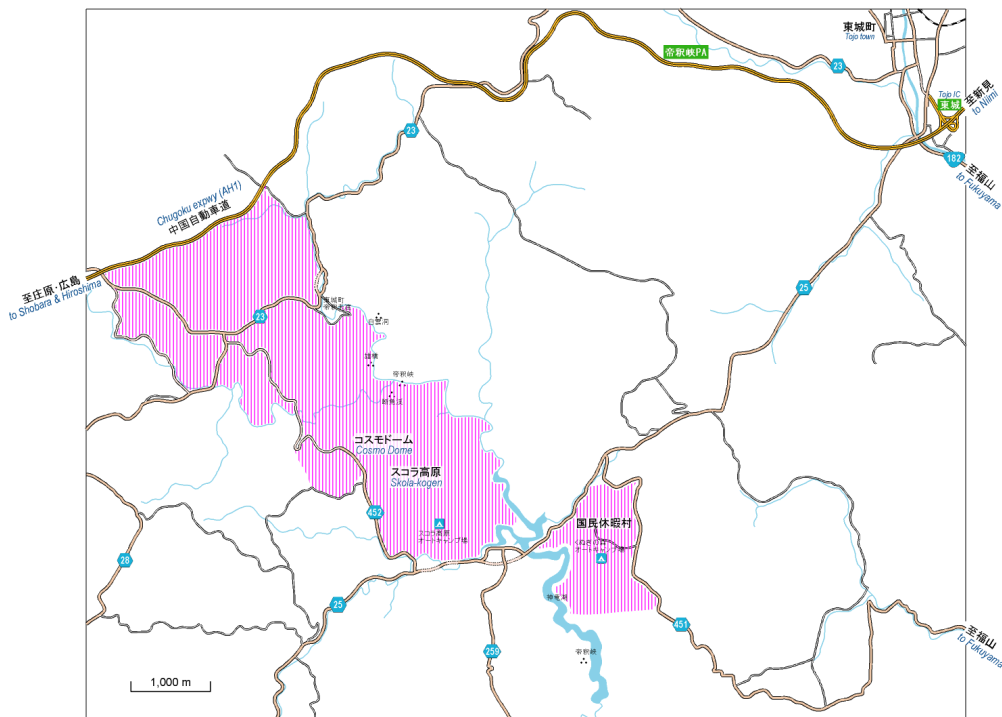
Both parts of the terrain are rich in topographic features. Narrow reentrants are well

developed in the northern part. In the southern part, small hills cover the area. There are also some rocky features and charcoal pits.

In lower parts of the highland, there are some vegetable fields. Also, many chestnuts orchards are seen on the highland, but they are shown as forest with runnability A; easy-to-run area. Many mushrooms fields (prohibited area) can be seen in the forest, too. The terrain contains some tracks and some paths. Main paths are used by recreational hikers.

Embargoed area:

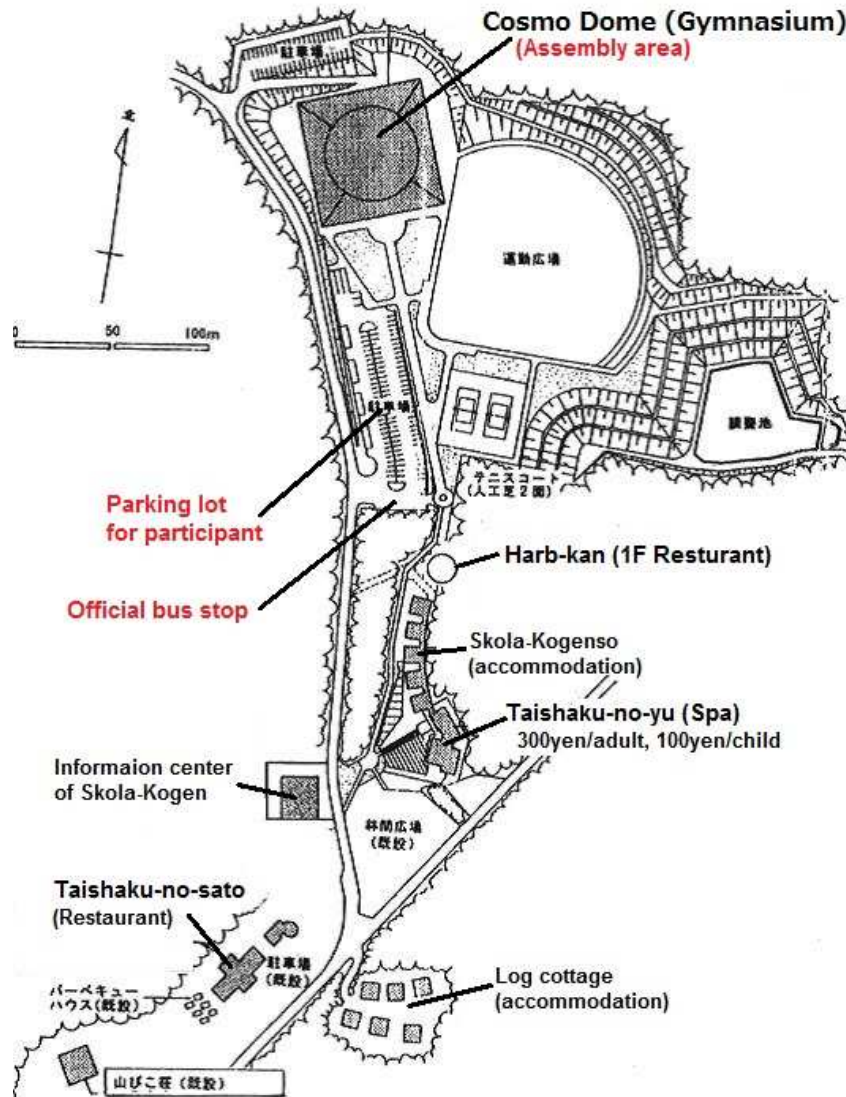
Following area is embargoed.



Passage through the area on public road other than the purpose of orienteering and its training is allowed.

Assembly area:

Facilities of Skola-Kogen



Parking lots:

Parking places are offered first-come-first-served basis.

There are three parking lots; in front of Cosmo Dome, roadsides, and in front of Yamabiko-so. Please follow instructions of the event officials when parking.

The organizer will bear no responsibility for any damage or loss occurred at the parking lots.

Map:

Map used for WRE is prepared according to the International Specification for

Orienteering Maps (ISOM 2000). It is printed by the inkjet printer under the approval of the MC, IOF, and is enclosed within a plastic bag. Map size is A4 (297x210mm).

Map scale is 1:15,000 and contour interval is 5m.

Following special symbols are used:

✕ : man-made features (small shrine, traps for animals, wasted car etc.)

○ : charcoal burning pit ruin

 : mushroom growing area (prohibited)

Please confirm them on the sample map.

All terrains have been mapped for competitive orienteering previously with high standards.

“Taishakukyo”: 1:15,000, 1:10,000, 1998.3

“Skola-Kogen: 1:10,000, 2004.10

“Taishakukyo & Skola-Kogen”: 1:15,000, 1:10,000, 2008.5

“Kokuminkyukamura Taishakukyo”: 1:5,000, 2010.5

Previous maps can be seen at our website.

Control description:

Control description is printed on the front side of a competition map. Loose copies of the control description (not water resistant) will also be available at the start lanes as a part of the start procedure. The size of the loose control description dimension is 55 x 155mm for M21E, and 55 x 120mm for W21E.

Class and course:

Classes for WRE are only M21E and W21E.

In addition to the WRE classes, 37 public classes are set.

Class	Course length	Climb	Winning time	Maximum running time	Number of controls	Size of control description	Number of participant
M21E	9.7 km	545 m	90 min	140 min	18	55x155mm	29
W21E	6.4 km	390 m	75 min	120 min	15	55x130mm	11

Seeding for starting order:

For the All Japan Championships, six competitors for M21E and five for W21E, who are nominated as certified athletes for JOA national team, are seeded.

Punching system:

The Emit electronic punching and timing system is used.

Please set a backup label on the E-card. If you are using a rental E-card, please return it to the officials at the finish after your race.

Training opportunity

There will be no opportunity for training. However, a local sprint event is held on May 3rd in the nearby area.

Instruction for the wear:

There is no restriction of competition clothes and shoes. However, the organizer recommends full cover clothing.

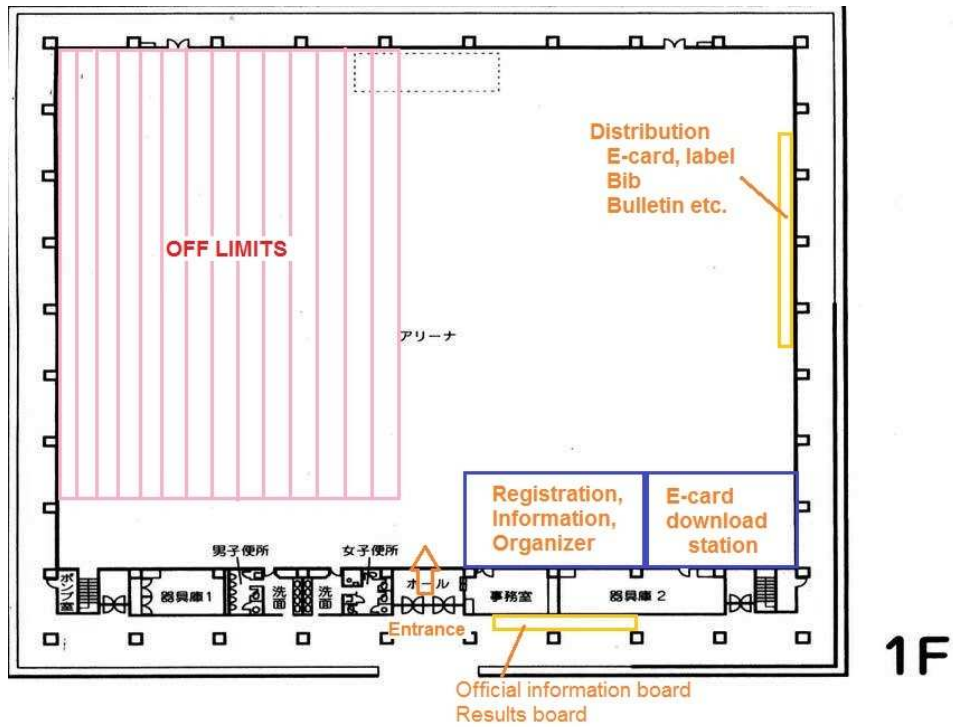
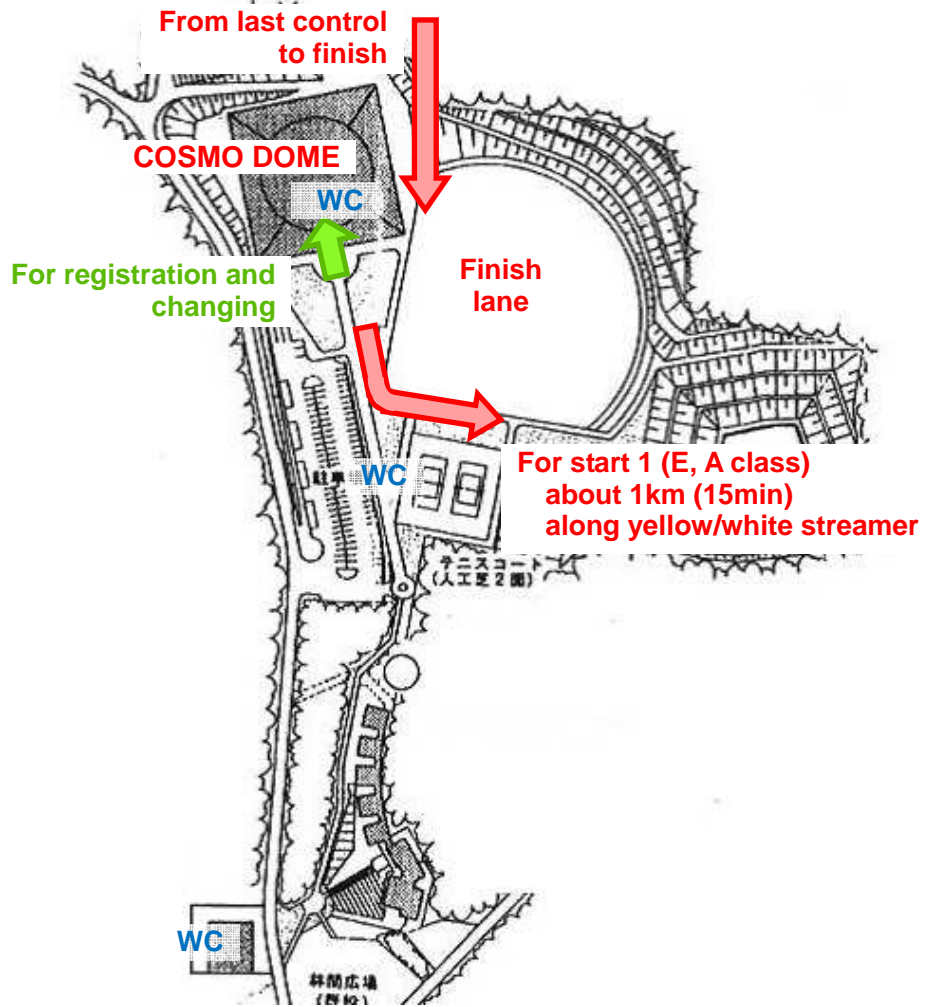
Bibs:

Competitors must wear a numbered bib on the chest to show the number clearly. Please bring safety pins for wearing a bib on your own.

GPS and equipment:

Competitors may not use or carry telecommunication equipment in the race, unless the equipment is approved by the organizer. GPS data loggers with no display or audible feedback can be used. Any other GPS equipment is forbidden.

Layout of assembly area



The second floor of Cosmo Dome is open for luggage storage. Toilets for men and women can be used, but shower rooms in changing rooms are not available.

Please do not wear orienteering shoes in the changing room (inside Cosmo Dome) to protect artificial lawn.

Start

From the assembly area (Cosmo Dome) to the start area (S1), it takes about 15 minutes (about 1km) on foot following yellow / white streamers.

Neither toilet nor refreshment is set at the start area.

At the start area, the clock displays an actual time of competition. Silent process is applied so that the competitor's name and his/her start time are not called. Please confirm your start time on your bib or start list displayed at the start area.

Competitor who forgot his/her E-card could not start.

Start will be closed at 12:20. After the closing time, competitor could not start.

Start procedure

In the start area, competitors will pass through 5 consecutive starting boxes.

5 minutes before the start: After activating your E-card, enter into the box. If you could not confirm the flashing of lamp, please contact the officials.

4 minutes before the start: Advance the box forwards.

3 minutes before the start: Enter into the box of your class. Here, the bib number and the starting time are checked by the officials.

2 minutes before the start: Advance the box forwards and pick up a loose control description of your course.

1 minute before the start: Advance the box forwards and confirm your course map by checking the control description on the map. After that, do not see the map

before starting. The competitor is responsible for taking the right map.
Lift-up system is applied for the start.

Late start: If you miss your start time, please contact the official and follow their instructions.

From the start lane to the start flag, you should follow red / white streamers.

Important notices to competitors

Competitors are never allowed to enter prohibited areas and private properties (residential zone and cultivated area) which are shown on the map. Those who enter the prohibited areas will be disqualified.

Do not enter the areas encompassed with blue / yellow streamers in the terrain. Some parts are very dangerous to get into.

When you find an injured person, please inform the place and conditions immediately to the officials. To rescue such injured person should have a priority over the competition.

Competitors who lost their EMIT card will be disqualified

At some points, competitors will cross roads, or run along them. Please always be very careful of traffic during the race.

Refreshment:

There is one refreshment control for M21E and two refreshment points on the route for M21E and W21E. Only pure water is served.

Finish

From the last control to the finish, please follow the red / white tape.

Punching finish system is applied for the finish. The finishing time is measured when you punch at the finish line and your race is over.

Competitors who do not punch at the finish line will be considered as "missing in the forest", and may cause a search in the forest for the missing person.

All the competition will end at 15:00.

Map reclaim:

Maps will not be collected after the competition. Maps must not be shown to competitors who have not started yet. When it turns out that a competitor show the map to another competitor before starting, both of them will be disqualified.

First aid:

A first-aid station with AED equipment is set in the event office. When you find a injured person, please inform the place and conditions immediately. To rescue such injured person should have a priority over the competition.

Responsibility and Safety:

All competitors who take part in the All Japan Championships 2012 must consider any risks and take their own safety precautions, and will be totally responsible for any injuries which might occur during the races.

Prizes

The first 3 competitors in each class (6 competitors in the WRE classes) receive prizes.

The title of Japan Orienteering Champion is awarded to the first Japanese competitor for each M21E and W21E.

The title of Junior Japan Orienteering Champion is awarded to the first Japanese competitor for each M20E and W20E.

Complaints and protests:

Any complaint should be made in writing to the organizer at the information desk in the venue as soon as possible. The organizer will decide on the outcome and inform the complainant of the result on the information board. Time limit for complaint will be 14:50. There is no fee for a complaint.

If the competitor is not satisfied with the result of the complaint, a protest can be made

against the organizer's decision, not later than 1 hour after that decision has been given to the competitor. Protests must be in writing and handed in at the Information desk. It will be forwarded to the IOF Event Adviser immediately. Protests will be handled by the jury, who will communicate their decision to the complainant as soon as possible. There is no fee for a protest.

START LIST

M21E

Start time	Bib No.	Name	WRE_ID	E-caed No.	氏名	所属
10:21	1	Eisuke Ota	JPN	407258	大田 瑛佑	早大 OC
10:24	2	Atsushi Koyama	JPN145	63997	小山 温史	NPO トータス
10:27	3	Kenya Matsui	JPN142	157415	松井 健哉	片塾
10:30	4	Kohei Onishi	JPN147	63905	大西 康平	ぞんび〜ず
10:33	5	Yohei Ike	JPN151	79273	池 陽平	京葉 OL クラブ
10:36	6	Takahiro Ota	JPN161	407258	太田 貴大	青葉会
10:39	7	Kunihiko Tano	JPN125	412157	田濃 邦彦	静岡 OLC
10:42	8	Koji Kashimada	JPN11	483425	鹿島田 浩二	渋谷で走る会
10:45	9	Tomoaki Naganawa	JPN150	478425	長縄 知晃	
10:48	10	Takeo Shinohara	JPN79	77032	篠原 岳夫	渋谷で走る会
10:51	11	Dai Teramura	JPN	84298	寺村 大	朱雀 OK
10:54	12	Noriaki Tarumi	JPN155	83129	樽見 典明	三河 OLC
10:57	13	Motofumi Marui	JPN93	77038	円井 基史	多摩 OL
11:00	14	Daichi Yamagami	JPN143	92716	山上 大智	東大 OLK
11:03	15	Hiroki Shinjo	JPN	64004	新城 大樹	京葉 OL クラブ
11:06	16	Masano Ebi	JPN122		海老 成直	朱雀 OK
11:09	17	Takashi Fujii	JPN112	413328	藤生 考志	東京 OL クラブ
11:12	18	Katsuya Yuki	JPN	150125	結城 克哉	東大 OLK
11:15	19	Toshiyuki Matsuzawa	JPN29	410185	松澤 俊行	静岡 OLC
11:18	20	Akira Tsuji	JPN	154944	辻 晃	金大 OLC
11:21	21	Shigeyuki Koizumi	JPN76		小泉 成行	O-Support
11:24	22	Kiyoshi Kogure	JPN109	76925	小暮 喜代志	ES 関東 C
11:27	23	Dai Yagishita	JPN73	400808	柳下 大	みちの会
11:30	24	Shunsuke Konno	JPN68	402170	紺野 俊介	横浜 OL クラブ
11:33	25	Shinichiro Sakuramoto	JPN106	478441	櫻本 信一郎	京葉 OL クラブ
11:36	26	Yuta Tanikawa	JPN141	87666	谷川 友太	名古屋大学
11:39	27	Ryo Kobayashi	JPN140	92739	小林 遼	渋谷で走る会
11:42	28	Daisuke Yamaguchi	JPN69	483370	山口 大助	ES 関東 C
11:45	29	Wataru Teragauchi	JPN75	171634	寺垣内 航	京葉 OL クラブ

W21E

Start time	Bib No.	Name	WRE_ID	E-card No.	氏名	所属
11:02	51	Rika Tajima	JPN2	401272	田島 利佳	みちの会
11:05	52	Madoka Kogure	JPN119	77045	渡辺 円香	ES 関東 C
11:08	53	Mikiko Minagawa	JPN86	158572	皆川 美紀子	みちの会
11:11	54	Sanae Saito	JPN67		斎藤 早生	チーム白樺
11:14	55	Eriko Ide	JPN8	64158	井手 恵理子	朱雀 OK
11:17	56	Tae Chiba	JPN	410215	千葉 妙	みちの会
11:20	57	Marie Sekiya	JPN25	64200	関谷 麻里絵	朱雀 OK
11:23	58	Mutsuko Hanaki	JPN	412130	花木 睦子	トータス
11:26	59	Shuko Hotoge	JPN120	171676	朴峠 周子	ときわ走林会
11:29	60	Miharu Takano	JPN135	412173	高野 美春	入間市 OLC
11:32	61	Naoko Kano	JPN6	483354	加納 尚子	朱雀 OK