

-middle distance-

The 11th Japan Orienteering Championships 2022

-long distance-

The 49th Japan Orienteering Championships 2022

IOF World Ranking Event / M21E & W21E

October 8/9, 2022

Event center: Fujiten Snow Resort

Address : 8545-1, Aza-Fujiyama, Narusawa-mura, Minamitsuru-gun, Yamanashi
prefecture

Google map: https://g.page/fujiten_now?share

Event Organizer	Japan Orienteering Association
IOF Event Adviser	Shin MURAKOSHI
National Controller	Toshitaka ISHIZAWA, Hideo INABA
Event Director	Saho KUME
Event Secretary	Daiki KUWABARA
Technical Director	Yutaro MIYANISHI
Course Planner (middle)	Yosuke OISHI
Course Planner (long)	Takashi IRIE

General Information

■ Access to the event center

By car

20 minutes from Kawaguchiko IC (Chuo Expressway)

20 minutes from Fujiyoshida IC (Higashi-Fujigoko Expressway)

Note: Visits by car is strongly recommended.

By train

The nearest station is Kawaguchiko station (Fujisanroku Electric Railway).

The convention bus will be provided from Kawaguchiko Station, Shinfuji Station (Tokaido Shinkansen Line, JR CENTRAL) and Fujinomiya Station (Minobu Line, JR CENTRAL) to the event center.

Please be sure to board the convention bus at the time of your reservation. You will not be allowed to board a bus with a different time than your reservation. The following buses will be available at the following locations Kawaguchiko Station: rotary in front of the station, Shin-Fuji Station: Mt.Fuji Side rotary, Fujinomiya Station: south exit rotary

Event bus

Please be sure to board the bus at the time of your reservation. You can get on the bus at the following locations.

Kawaguchiko Station: rotary in front of the station

Shin-Fuji Station: Mt.Fuji Side rotary (富士山口)

Fujinomiya Station: south exit rotary (南口)

■ Arena



■ Contact address

e-mail: ajoc@orienteering.or.jp

Contact person about VISA: Kimiya OCHIAI (ochiai.kimiya@gmail.com)

Competition Information

■ General information

	Oct. 8	Oct. 9
Race	Middle distance	Long distance
Event Center Opens	8:00	7:15
First Start	11:20	9:00
Quarantine Deadline (M21E/W21E only)	-	10:00
Prize Ceremony	14:30	13:45
Finish close	15:40	14:50

■ Guidance to the start

Middle distance (Oct. 8)

From the event center to the starting area, follow the yellow tape for about 0.9 km (about 15 minutes).

Long distance (Oct.9)

W21E/M21E

Follow the map you received at the registration desk and stop at the waiting area, which is about 20 minutes, 0.7 km from the venue. Then follow the map and yellow tape to the start area, which is about 0.7 km (20 minutes) away.

Other classes

Follow the yellow tape for about 0.2 km (about 5 minutes).

■ Quarantine (Long distance race of M21E/W21E only)

The JOC Long has a pre-race quarantine for all elite competitors. All competitors must be signed into the quarantine by 10:00.

■ **Race information**

	Oct. 8	Oct. 9
	Middle distance	Long distance
Start interval	2 minutes	2 minutes
Map Scale	1:10,000	1:10,000
Contour interval	5m	
Map Specification	ISOM2017-2	
Old/previous Map	You can see it by visiting following URL https://www.orienteering.or.jp/joc/2022/assets/img/fujiten.jpg https://www.orienteering.or.jp/joc/2022/assets/img/jiragonno.jpg	
Special Symbol	○ : Charcoal burning ground × : sign, trap cage	
Punching system	SPORTident system (SI-card)	

Note1: Possession or use of any orienteering or other maps of the competition area is prohibited during the competition day at the race site until officially permitted.

Note2: There will be deviations as to the start lists from the "WRE Manual 2022" published by the IOF. The start order will be decided according to the National ranking of Japan instead of IOF world ranking.

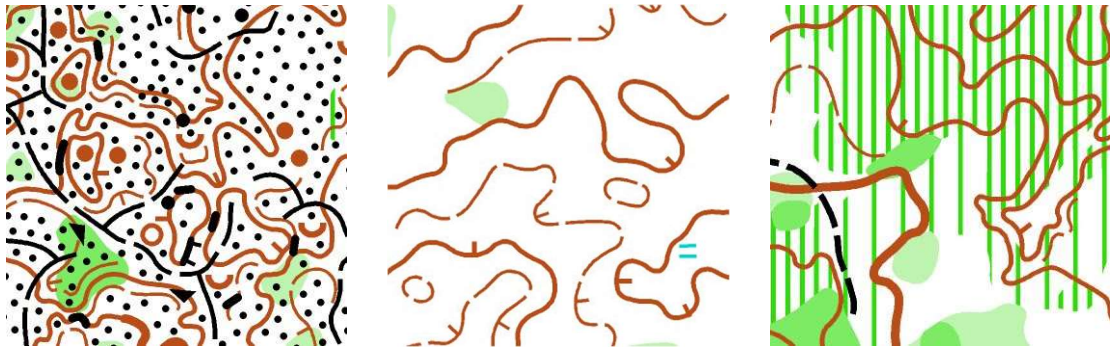
Note3: The map scale for long distance is 1:10,000 since the IOF Event Adviser approved the scale of 1:10,000 because of the readability of the map with detailed features.

Note4: Personal SI-cards can be used.

■ **Terrain information**

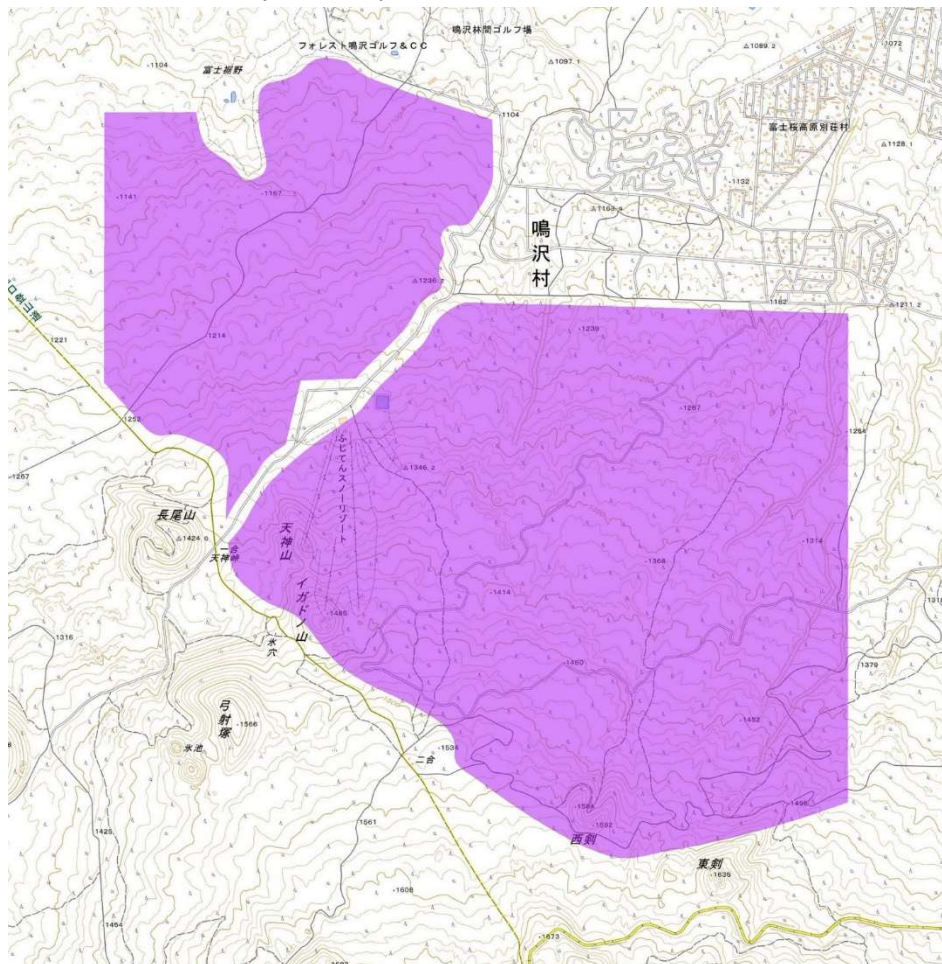
This terrain is located at an altitude of about 1100 to 1400 meters above sea level and consists of Fujiten Snow Resort and the surrounding mountain forest. In the northwestern part, the slope is generally gentle with some micro terrain features. In the southeastern part, there are steep areas with some re-entrants. Most of the terrain is forest (A) (405) with good visibility, but some areas are difficult to run fast because of vegetation or stony ground. Roads, vehicle track or footpath exist almost throughout the area, but there are some areas with no footpath. Rivers and wetlands are few. In the northwestern part, there are scattered boulders of various sizes.

■ Sample maps



■ Embargoed area

According to the IOF Competition rules (§ 26.5), the embargoed areas are completely forbidden to visit by all competitors.



■ **Classes (World Ranking Event)**

W21E and M21E are the classes for World Ranking Event.

Middle distance (Oct. 8)

Class	Length	Climb	Winning time	Number of controls	Number of water station	Maximum running time
W21E	4.3km	165m	35min	14	0	120
M21E	5.3km	195m	35min	19	0	120

Long distance (Oct.9)

Class	Length	Climb	Winning time	Number of controls	Number of water station	Maximum running time
W21E	9.0km	310m	80 min	18	4-6	180
M21E	13.6km	520m	95 min	28	4-6	180

Note1: There is no water station with controls.

Note2: You can leave refreshments at a point after arena passage (please refer to the map of Arena). Please write your name and bib number on your refreshments pack. The location is about 70% of each course, and drawn as a water station in the map. Water is also available here.

■ **Clothing and shoes**

There are no regulations regarding clothing and shoes, but we recommend bringing some items below.

- Bear bells

We **strongly recommend** carrying the bells because black bears have been reported virtually any mountain regions. However, no injury of orienteers has been reported so far.

- Leg guards, gloves and whistle (since there are some areas with stony ground, and the boulders are pointy because they are lava)

- Insect repellent spray, long sleeves and pants (since ticks are found in the terrain)

Only GPS (GNSS) equipment without image display and audible feedback is allowed to be used.

■ Climate and Hazards

Average values over the past 30 years are as follows.

The observation point: Lake Kawaguchi

Note: The elevation of the observation point is 860m (240~540m lower than the terrain).

Average temperature (°C)	14.3
Maximum temperature (°C)	19.0
Minimum temperature (°C)	10.6
Precipitation days (in 60days)	36

There are bees, but they are very unlikely to be encountered during the event.

■ Control descriptions

Control descriptions are in accordance with the IOF standard. The control descriptions will be available in the start corridor. The control descriptions are also printed on the competition maps. Maximum size 170mm x 60mm for the middle distance race and 235mm x 60mm or less for the long distance.

The symbol 5.19 corresponds to charcoal burning ground.

■ Complaints and Protests

A complaint must be made in writing as soon as possible and given to the event center. There is no fee for a complaint. Complaints concerning results must be made no later than 30 minutes after finish closing.

A protest can be made against the organizer's decision about a complaint. Any protest must be made in writing to the Event Office no later than 15 minutes after the organizer has informed the complainant of the decision about the complaint. There is no fee for a protest.

■ Jury

Middle distance (Oct. 8)

Tsutomu Yoshida (M60A)

Yoko Miyoshi (W35A)

Shota Tanaka (M21A)

Long distance (Oct. 9)

Shunji Hirashima (M70A)

Toru Tanaka (M60A)

Saori Nishina (W35A)

Note: All the members are Japanese.

Other information

■ Visa

Please ask your nearest Japanese Embassy for further details or visit following URL for latest information.

http://www.mofa.go.jp/j_info/visit/visa/

If you cannot get enough information, please contact us(ochiai.kimiya@gmail.com).

■ Accommodation

There are many dormitories, hotels, cottages and other kinds of accommodation in Narusawa-mura. Accommodation fee is about 6-12 thousand yen with two or three meals per night. Please check following URL.

<https://www.narusawa-kanko.jp/all-round.html>

Note: Sorry for the lack of English information. If you click on the image of each accommodation, you can get information from their websites.

■ Transportation

If you need support about transportation, please ask our contact office.

e-mail: ajoc@orienteering.or.jp

■ Web site/SNS

Web site: <https://orienteering.or.jp/joc/2022/>

Twitter: <https://twitter.com/orienteeringJOC>

Instagram: <https://www.instagram.com/orienteeringjoc/>