

Version 1.3 Revised on Sep 26

(Added extra entry fee for September 7th - October 15th)

-middle distance-

The 12th Japan Orienteering Championships 2023

-long distance-

The 50th Japan Orienteering Championships 2023

IOF World Ranking Event / M21E & W21E

November 4/5, 2023

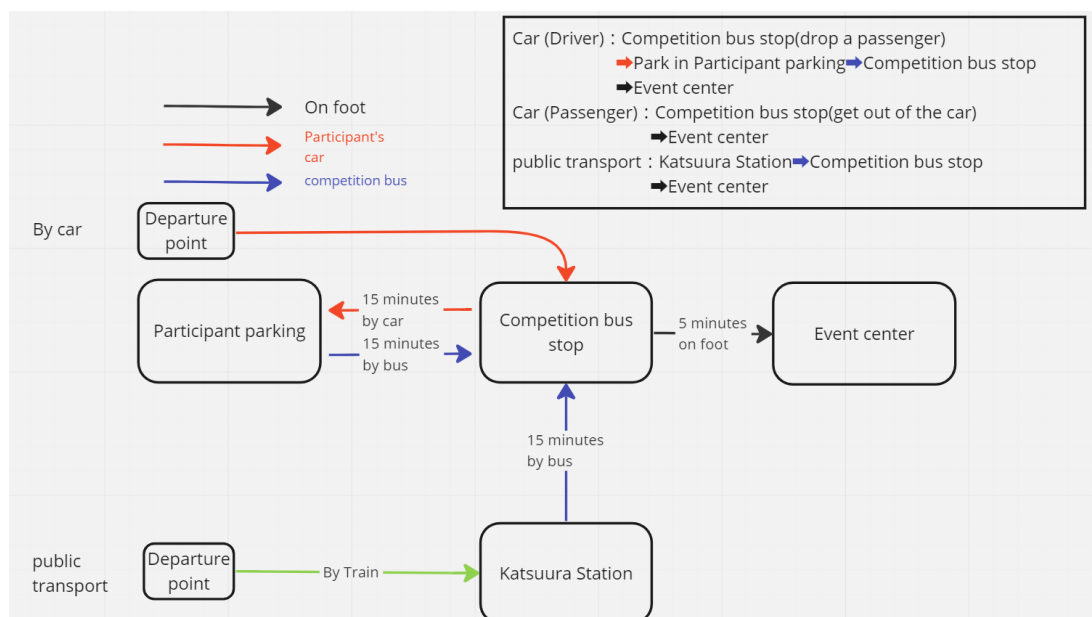
Event center: Katsuura Municipal North Junior High School (Closed school)
Address : 58-2, Kobado, Katsuura-shi, Chiba prefecture
Google map: <https://goo.gl/maps/Rvpha5tFhMLJoq858> (35.1796652N, 140.2657125E)

Event Organizer	Japan Orienteering Association
Event Adviser	Hideo INABA Toshitaka ISHIZAWA Rito SUZUKI
Event Director	Ryota HIRAYAMA
Event Secretary	Jun IJICHI
Technical Director	Yutaro MIYANISHI
Course Planner (middle)	Tetsuya MIYAJIMA
Course Planner (long)	Koji KASHIMADA
IOF Event Adviser	Toru TANAKA



General Information

■ Access to the event center



Competition bus stop

<https://goo.gl/maps/qtCn4xAYJgzbSDtv9> (35.1390862N, 140.2645103E)

It is not possible to come directly to the event center by car.

Please walk to the Event center from the **Competition bus stop**. It takes 5 minutes on foot.

By car

2 hours from Narita Airport

1 hour 40 minutes from Haneda Airport

Drivers should use the competition bus from the participant parking.

By train

The nearest station is Katsuura station (JR Sotobō Line).

The competition bus will be provided from Katsuura station to the Competition bus stop.

When using Katsuura station, the competition bus should be used. Please refrain from using ordinary buses and other public transportation as much as possible.

Information is also available on the Japanese version of bulletin. If you need more information in English, please email us.

Competition bus entry form

<https://va.apollon.nta.co.jp/orienteering2023/>

Sorry, the competition bus entry site is only available in Japanese.

If you do not know how to enter from the website, please contact us by e-mail.

■ Contact address

e-mail: ajoc@orienteering.or.jp

Contact person about VISA: Kimiya OCHIAI (ochiai.kimiya@gmail.com)

Competition Information

■ General information

	Nov. 4	Nov. 5
Race	Middle Distance	Long Distance
First Start	10:00	9:00
Finish close	15:00	14:30

■ Race information

	Nov. 4 Middle distance	Nov. 5 Long distance
Start interval	2 minutes	2 minutes
Map Scale	1:10,000	1:15,000
Contour interval	5m	
Specification	ISOM2017-2	
Old/previous Map	You can see by visiting following URL https://www.orienteering.or.jp/wp-content/uploads/2022/10/map_katsuura_okusu_199712.jpg	
Punching system	SPORTident system (SI-card)	

Note1: There will be deviations as to the startlists from the "WRE Manual 2023" published by the IOF. The start order will be decided according to the National ranking of Japan instead of IOF world ranking.

Note2: Personal SI-cards can be used.

■ Terrain information

▶ Overview

The competition area is a mountain forest in Katsuura City, Chiba Prefecture.

▶ Terrain

The altitude difference in the terrain is not so high at about 60m. However, the ridges and streams are intricate and the terrain is complex.

The steep slopes are easy to collapse and slippery.

In addition, earth banks exist everywhere.

▶ Vegetation

Overall runnability is high, but there are places where runnability drops significantly locally.

Gentle parts on ridges and streams often have high runnability, and steep slopes often have low runnability. There are also some rough open lands.

▶ Paths and others

There are some paths all over the terrain. There are rivers, marshes, and ponds, and there are no boulders.

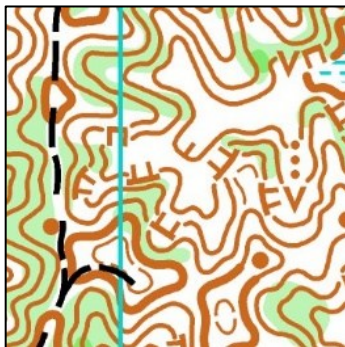
It is dotted with sheer cliffs, some of which are dangerous.

▶ Special notes/dangers

Inhabitation of ticks was confirmed in the competition area. Please refer to the recommended equipment listed in the **Equipments** section.

Mountain leeches have also been confirmed to inhabit, but they are thought to be almost inactive during the competition season.

■ Sample maps

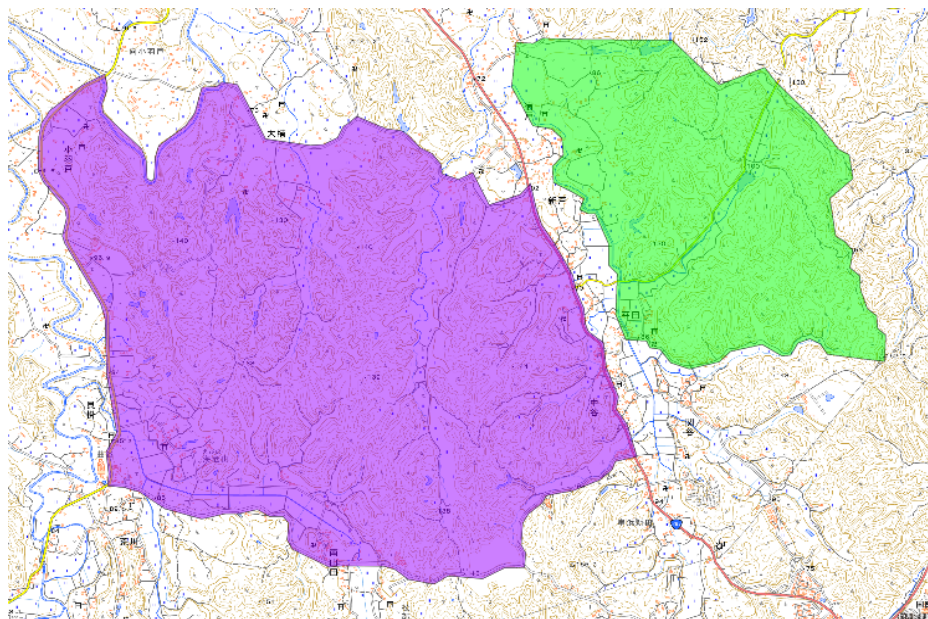


■ **Embargoed area**

The purple colored area in the map below is the embargoed area as defined by the IOF Competition rules (§ 26.5).

All competitors are prohibited from entering before the start of the competition.

In addition, although the green colored area is not included in the competition area of this competition, for the convenience of competition management, entry is prohibited as in the embargoed area.



■ **Class (World Ranking Event)**

W21E and M21E are the classes for World Ranking Event.

	Nov. 4		Nov. 5	
	Middle Distance		Long Distance	
Class	Length	Winning time	Length	Winning time
W21E	4km	35 minutes	8km	80 minutes
M21E	5km	35 minutes	11km	90 minutes

Note 1: There will be a restriction on the entry of foreign competitors in this race.

The organizer will check the world ranking and inform you whether you can entry or not. Competitors must have an IOF ID. Visit IOF eventor to obtain or search for your IOF ID, and enter your IOF ID when you register.

Note 2: There is Non-World Ranking Event class. The information will be published in the bulletin for Japanese. If you need the information in English, please email us.

■ **Entry fees**

	Class	Regular	University students	18 and younger
Nov. 4 Middle distance	W21E	6500 JPY	4000 JPY	2500 JPY
Nov. 5 Long distance	/M21E	7500 JPY	4500 JPY	3000 JPY

Note1: Not including SI-card rental fee. If you use rental SI-card, rental fee 200 JPY is added to the entry fee per each day.

Note2: Students must be between 19 and 28 years old at March 31, 2024, and studying in university, junior college, graduate school, or technical college.

Note3: Due to competition management, we encourage early entry.

Therefore, there is an extra fee (1,000 JPY/race) for entries **from September 7th to October 15th.**

■ **Equipments**

There are no regulations regarding clothing and shoes, but the following items or clothing are recommended.

- Insect repellent spray (containing DEET), long sleeves and pants (since ticks are found in the terrain)
- Shoes with metal studs (since slopes are slippery)
- Whistle (to prepare for emergencies)

■ **Climate and Hazards**

Average values over the past 30 years are as follows.

The observation point: Katsuura Observatory

Average temperature (°C)	15.9
Maximum temperature (°C)	19.8
Minimum temperature (°C)	12.4
Precipitation days (in 60days)	23

■ Model event

There is a model event in the similar terrain as follows.

When you enter, you should choose date and time you attend.

Date: October 28-29, 2023 (Saturday and Sunday) & November 3, 2023 (Friday)

Time: Open at 13:00 (Oct 28) or 09:30 (Oct 29 & Nov 3), Close at 16:15 (all day)

Event center: Katsuura school lunch center

Address: 270-2, Shindo, Katsuura-shi, Chiba prefecture

Google map: <https://goo.gl/maps/wAyP1maF8A9fGboo6>(35.1796470N, 140.2955595E)

Demonstration: terrain type, map quality, control set-up (except punching systems)

Entry fee: 1,500 JPY

Entry procedure

Deadline: Sunday, October 15, 2023

Payment closing date: Monday, October 16, 2023

Entries can be made through web entry system.

If you do not know how to enter from the websites, please contact us by e-mail.

■ Web entry system

Please visit following URL and fill the entry form.

Model event: <https://japan-o-entry.com/event/view/1390>

Note: If you enter the model event after Sep 7, please contact us by e-mail.

Middle: <https://japan-o-entry.com/event/view/1342>

Long: <https://japan-o-entry.com/event/view/1278>

Note: This entry system is written by Only Japanese. If you need instructions on how to use it, please visit following URL.

https://japan-o-entry.com/public_file/guide_for_foreign_customer.pdf

■ Payment

Payment can be made by the **web entry system**. You can pay the entry fee by credit card.

Other information

■ Visa

Please ask your nearest Japanese Embassy for further details or visit following URL for latest information.

http://www.mofa.go.jp/j_info/visit/visa/

If you cannot get enough information, please contact us (ochiai.kimiya@gmail.com).

■ Accommodation

There are many dormitories and hotels in Katsuura-shi and nearby municipalities . There are hotels, cottage and other kinds of accommodation. Accommodation fee is about 6-12 thousand JPY with two or three meals per night. Please check following URL.

<https://www.katsuura-kankou.net/katsuuratime/stay/>

Note: Sorry for the lack of English information. If you click on the URL of each accommodation, you can get information from their websites.

If you need support about Accommodation, please ask our contact office.

e-mail: ajoc@orienteering.or.jp

■ Transportation

If you need support about transportation, please ask our contact office.

e-mail: ajoc@orienteering.or.jp

■ Web site/SNS

Web site: <https://orienteering.or.jp/joc/2023/>

Twitter: <https://twitter.com/orienteeringJOC>

Instagram: <https://www.instagram.com/orienteeringjoc/>