

IOF World Ranking Event / M21E & W21E
November 4 / 5, 2023

-Middle distance-

The 12th Japan Orienteering Championships

-Long distance-

The 50th Japan Orienteering Championships

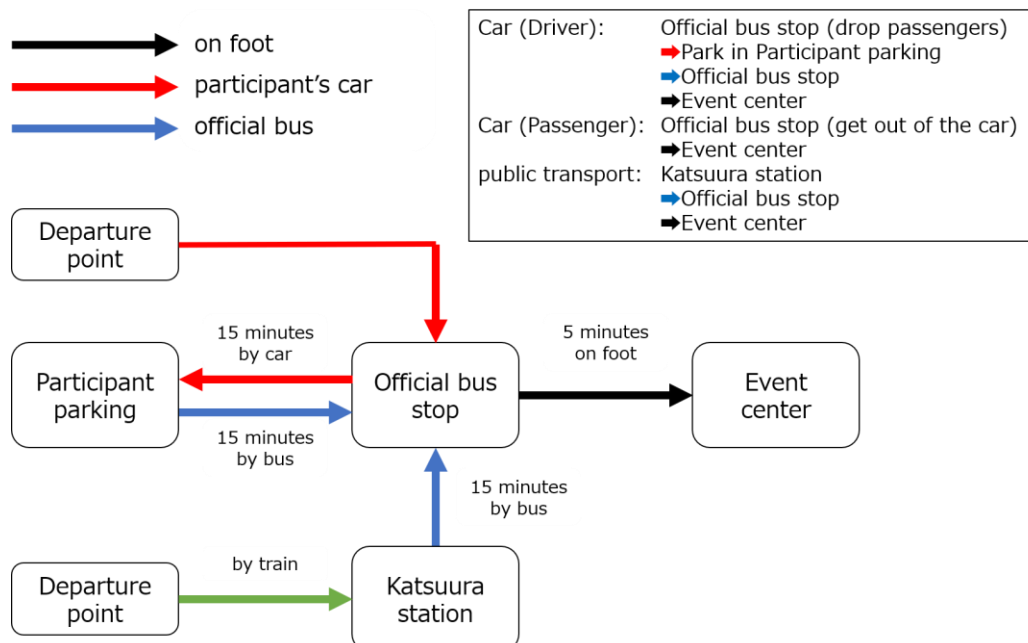
Bulletin 2

Event center: Katsuura Municipal North Junior High School (Closed school)
Address: 58-2, Kobado, Katsuura-shi, Chiba prefecture
(35.1796652N, 140.2657125E)
Google map: <https://maps.app.goo.gl/FfsKwmvVC4bq1YH5A>

Event Organizer	Japan Orienteering Association
Event Adviser	Hideo INABA Toshitaka ISHIZAWA Rito SUZUKI
Event Director	Ryota HIRAYAMA
Event Secretary	Jun IJICHI
Technical Director	Yutaro MIYANISHI
Course Planner (Middle)	Tetsuya MIYAJIMA
Course Planner (Long)	Koji KASHIMADA
IOF Event Adviser	Toru TANAKA

General Information

■ Access to the event center



Official bus and Participant parking entry form

<https://va.apollon.nta.co.jp/orienteering2023/>

You must book the official bus and participant parking by 17:00 (UTC+0900) on Oct. 19.

We are sorry for this form is only available in Japanese.

If you do not know how to enter from the website, please contact us by e-mail.

Official bus stop

All participants should finally walk to the event center from here. It takes 5 minutes on foot.

Location: <https://maps.app.goo.gl/oEU6uEFibjBM5T2Q6> (35.1390862N, 140.2645103E)

By car (Participant parking)

2 hours from Narita Airport. 1 hour 40 minutes from Haneda Airport.

It is not possible to come directly to the event center by car.

But passengers can get off at the official bus stop.

Drivers should use the official bus from the participant parking.

Location: <https://maps.app.goo.gl/brjGZJDBbwG6cum3A> (35.1391213N, 140.2643790E)

By train

The nearest station is Katsuura station (JR Sotobō Line).

The official bus will be provided from Katsuura station to the Official bus stop.

When using Katsuura station, the official bus should be used.

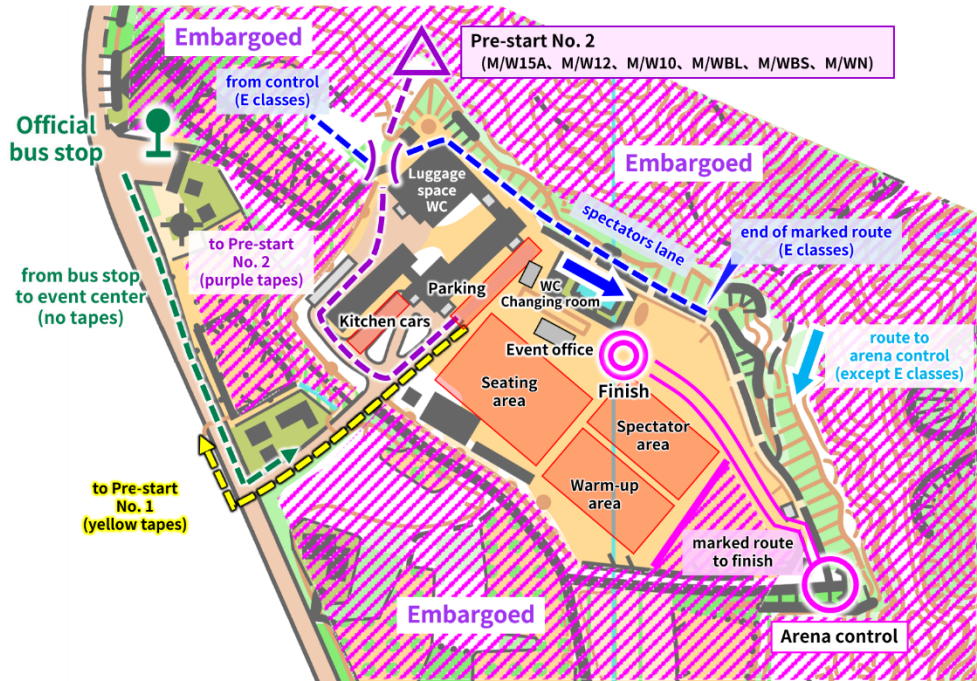
Please refrain from using ordinary buses and other public transportation as much as possible.

Information is also available on the Japanese version of bulletin.

If you need more information in English, please email us.

■ Event center / Arena

11/4 Sat
Middle



11/5 Sun
Long



Note1: Tents and tarps can only be set up in the seating area.

Note2: Parking in the event center is available only to participants whose parking application was approved at the time of entry.

Note3: The gymnasium is open for luggage space. Please take care of your valuables by yourself.

Note4: Please cheer for the athletes from the spectator area (no seats allowed).

Note5: Please do not assist or interfere with the competitors' running or route choice.

Note6: Entry into the out-of-bounds area (embargoed and infield portion of the baseball field) is strictly prohibited.

Note7: There are some flags for the beginner's trial in the event center. You also can participate in the trial after your race finish (entry fee must be paid in only cash JPY).

■ Contact

e-mail: ajoc@orienteering.or.jp

Contact person about VISA: Kimiya OCHIAI (ochiai.kimiya@gmail.com)

Competition Information

■ General information

	Nov. 4	Nov. 5
Race	Middle distance	Long distance
Event Center Opens	8:00	7:00
First Start	10:00	9:00
Prize Ceremony	14:35 (MW21/20E) 12:00 (Other classes)	13:40 (MW21/20E) 10:45 (Other classes)
Finish Close	15:05 (Changed from bulletin 1)	14:45 (Changed from bulletin 1)

■ Guidance to the start

The pre-start differs depending on the class.

Middle distance (Nov. 4)

No. 1: Most classes (including M21E, W21E)

Follow the yellow tape for about 1.3 km (about 20 minutes).

No. 2: MN, MBS, MBL, M10, M12, M15A, WN, WBS, WBL, W10, W12, W15A

Follow the purple tape for about 0.3 km (about 10 minutes).

Long distance (Nov. 5)

No.1: Most classes (including M21E, W21E)

Follow the yellow tape for about 1.3 km (about 20 minutes).

No. 2: M90A, W90A, W85A, W80A, W75A

Follow the purple tape for about 0.2 km (about 5 minutes).

■ Quarantine

There is no quarantine.

You can go directly to the pre-start from the event center.

■ Race information (World Ranking Event M21E, W21E)

	Nov. 4 Middle distance	Nov. 5 Long distance
Start interval	2 minutes	2 minutes
Map Scale	1:10,000	1:15,000
Contour interval	5m	
Map Specification	ISOM2017-2	
Old/previous Map	You can see by visiting following URL https://www.orienteering.or.jp/wp-content/uploads/2022/10/map_katsuura_okusu_199712.jpg	
Special Symbol	○ : charcoal burning ground × : small man-made structure (capturing cage, sign, etc.)	
Punching system	SPORTident system (SI-card)	

Note1: Personal SI-cards can be used.

Note2: Possession or use of any orienteering or other maps of the competition area is prohibited during the competition day at the race site (same as embargoed area) until officially permitted.

Note3: There will be deviations as to the start lists from the “WRE Manual 2023” published by the IOF. **The start order will be decided according to the National ranking of Japan combined with IOF World Ranking.** Here’s how:

On both days, seeded players is determined according to the criteria table below.

	M21E	W21E
S-seed	IOF World Ranking Men Japanese 3rd or higher	IOF World Ranking Women Japanese 3rd or higher
A-seed	IOF World Ranking Men Japanese 10th or higher Or National ranking of Japan (total) 10th or higher	IOF World Ranking Women Japanese 10th or higher Or National ranking of Japan (women) 10th or higher
B-seed	IOF World Ranking Men Japanese 35th or higher Or National ranking of Japan (total) 35th or higher	IOF World Ranking Women Japanese 35th or higher Or National ranking of Japan (women) 35th or higher

The starting order will be non-seed, B-seed, A-seed, and S-seed, with a random draw within each group.

“IOF World Ranking” in the table is the ranking of FootO Middle/Long, Japan as of September 7, 2023. cf. <https://ranking.orienteering.org/Ranking>

“National ranking of Japan” in the table is the ranking of forest (Road to 2023).

cf. https://japan-o-entry.com/ranking/ranking/ranking_index/19/%E7%B7%8F%E5%90%88
https://japan-o-entry.com/ranking/ranking/ranking_index/20/%E5%A5%B3%E5%AD%90

■ Terrain information

▶ Overview

The competition area is a mountain forest in Katsuura City, Chiba Prefecture.

▶ Terrain

The altitude difference in the terrain is not so high at about 60m. However, the ridges and streams are intricate and the terrain is complex. The steep slopes are easy to collapse and slippery. In addition, earth banks exist everywhere.

▶ Vegetation

Overall runnability is high, but there are places where runnability drops significantly locally. Gentle parts on ridges and streams often have high runnability, and steep slopes often have low runnability. There are also some rough open lands.

▶ Paths and others

There are some paths all over the terrain. There are rivers, marshes, and ponds, and there are no boulders. It is dotted with sheer cliffs, some of which are dangerous.

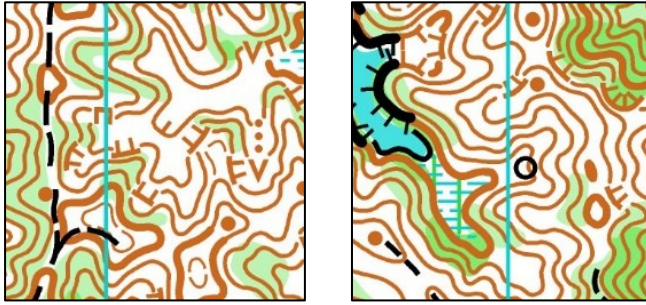
▶ Special notes/dangers

Inhabitation of ticks was confirmed in the competition area. Please refer to the recommended equipment listed in the Equipments section. Mountain leeches have also been confirmed to inhabit, but they are thought to be almost inactive during the competition season.

Note: In most classes, competitors will pass through the tunnel around the arena on both days. An example of the notation is shown in the figure below.



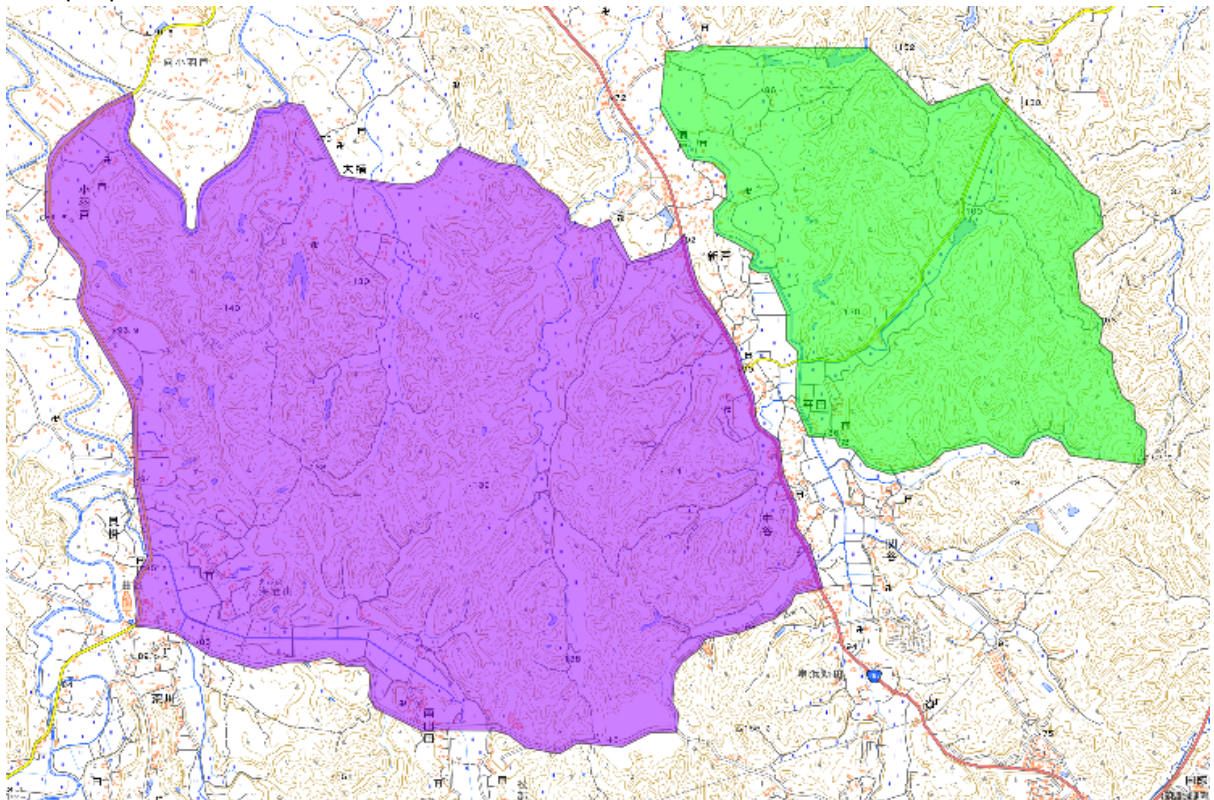
■ Sample maps



■ Embargoed area

The purple-colored area in the map below is the embargoed area as defined by the IOF Competition rules (§ 26.5). All competitors are prohibited from entering before the start of the competition.

In addition, although the green-colored area is not included in the competition area of this competition, for the convenience of competition management, entry is prohibited as the purple-colored area.



■ Classes (World Ranking Event)

M21E and W21E are the classes for World Ranking Event.

Middle distance (Nov. 4)

Class	Length	Climb	Winning time	Number of controls	Number of water station	Maximum running time
M21E	3.9km	310m	35 min	14	0	90
W21E	3.3km	275m	35 min	13	0	90

Long distance (Nov.5)

Class	Length	Climb	Winning time	Number of controls	Number of water station	Maximum running time
M21E	10.3km	680m	90 min	22	6	180
W21E	7.3km	480m	80 min	20	5	180

Note1: We set maximum running time for competition safety. If you exceed this, you will be subject to a search. When you are about to exceed maximum running time, head to the finish. You must strictly adhere to this.

Note2: ONLY in Long distance (Nov. 5), you can leave refreshments at a point after spectators lane (please refer to the map of Event center). Please write your name and bib number on your refreshments pack. The location is about 70% (W21E), 50% (M21E) of each course, and drawn as a water station in the map. Water is also available here.

■ Equipment (Measures against hazards)

There are no regulations regarding clothing and shoes, but the following items or clothing are recommended.

- Insect repellent spray (containing DEET), long sleeves and pants (since ticks are found in the terrain)
- Shoes with metal studs (since slopes are slippery)
- Whistle (to prepare for emergencies)

Note: Only GPS (GNSS) devices without image display and audible feedback is allowed to be used. They must have no communication capability other than receiving GPS data. You must confirm that they are not used for navigation purposes.

■ Climate

Average values over the past 30 years are as follows.

The observation point: Katsuura Observatory

Average temperature (°C)	15.9
Maximum temperature (°C)	19.8
Minimum temperature (°C)	12.4
Precipitation days (in 60days)	23

■ Control descriptions

Control descriptions are in accordance with the IOF standard. The control descriptions will be available in the start corridor. Maximum size is 145mm x 60mm for the Middle distance and 210mm x 60mm for the Long distance.

The control descriptions are also printed on the maps.

■ Complaints and Protests

A complaint must be made in writing as soon as possible and given to the Event office. There is no fee for a complaint. Complaints concerning results must be made no later than 30 minutes after start closing or 30 minutes after your finish, whichever comes later.

A protest can be made against the organizers' decision about a complaint. Any protest must be made in writing to the event office no later than 15 minutes after the organizer has informed the complainant of the decision about the complaint. There is no fee for a protest.

■ Jury

Middle distance (Nov. 4)

Hisako Murakoshi (W35A)

Takanori Arata (M21A)

Kenji Kusunoki (M21A)

Long distance (Nov. 5)

Tsunemasa Aiba (M65A)

Wasuke Saito (M60A)

Akane Tanaka (W21A)

Note: All the members are Japanese.

■ Model event

We hold the model event in the similar terrain as follows.

Only those who have applied can participate in model event.

Date: October 28-29, 2023 & November 3, 2023

Time: Time Zone 1 13:30-15:30 (Oct 28 Sat)

Time Zone 2 10:00-12:00 (Oct 29 Sun)

Time Zone 3 13:30-15:30 (Oct 29 Sun)

Time Zone 4 10:00-12:00 (Nov 3 Fri)

Time Zone 5 13:30-15:30 (Nov 3 Fri)

You cannot enter the model event outside of these hours.

Reception starts at 13:00 (Oct 28) or 9:30 (Oct 29, Nov 3).

Closing time is 16:15 (all days)

Event center: Katsuura school lunch center

Address: 270-2, Shindo, Katsuura-shi, Chiba prefecture
(35.1796470N, 140.2955595E)

Google map: <https://maps.app.goo.gl/CCdyppbwBPBhSfQH9>

Demonstration: terrain type, map quality, control set-up (except punching systems)

Note1: The event center is outdoors. There is no indoor luggage space. As this is a cooking facility, please use it in a sanitary manner.

Note2: There are no toilets or changing rooms at the event center. The toilet at 7-Eleven Katsuura No. 297 Bypass Minami store (10 minutes walk from the event center) is available for special use.

(35.1870510N, 140.2919487E. <https://maps.app.goo.gl/NYVXqL9X3jZTnyHU9>)

Note3: **You MUST report on entering and returning from the terrain for each time zone. That is, you must report twice (entering and returning) in the reception in event center. If you do NOT report your return, you may be subject to a search. We will confirm your safety by phone or email.**

Note4: There are no entries on the day. We don't specify a start time.

Note5: It is about 20 minutes walk to the model event area. Please follow the directions on the map and move to the area. When moving, please be careful not to cause any inconvenience to surrounding residents.

Note6: The model event area is included in the restricted area for this competition. This is adjacent to the competition area, so please be careful not to enter the out-of-bounds areas on the map. If you enter the out-of-bounds areas, you will be disqualified from the competition.

Other information

■ Visa

Please ask your nearest Japanese Embassy for further details or visit following URL for latest information.

http://www.mofa.go.jp/j_info/visit/visa/

If you cannot get enough information, please contact us (ochiai.kimiya@gmail.com).

■ Accommodation

There are many dormitories and hotels in Katsuura-shi and nearby municipalities. There are hotels, cottages and other kinds of accommodation. Accommodation fee is about 6-12 thousand JPY with two or three meals per night. Please check following URL.

<https://www.katsuura-kankou.net/katsuuratime/stay/>

Note: Sorry for the lack of English information. If you click on the URL of each accommodation, you can get information from their websites.

If you need support about accommodation, please ask our contact office.

e-mail: ajoc@orienteering.or.jp

■ Transportation

If you need support about transportation, please ask our contact office.

e-mail: ajoc@orienteering.or.jp

■ Website / SNS

Website: <https://orienteering.or.jp/joc/2023/>

X (Twitter): <https://twitter.com/orienteeringJOC>

Instagram: <https://www.instagram.com/orienteeringjoc/>